



Pending Grants submitted :

- NSF Grant **\$895,275**
- Presidential Seed Programs
 - Seed Grand (PI -Assaf Oshri) **\$100,000**
 - Seed Grand (PI-Steve Kogan) **\$100,000**
- NIH R01-Suicide Grant **\$2,500,000**



	Wave 1	Wave 2
Total Participants	recruited 281	scheduled 50
Family Visits Complete	270	49
BIRC Visits Complete	268	40
February Participants	recruited 2	scheduled 26



Current Research at GCDS



Dr. Cullin Howard in collaboration with **Grace Steffen** in Department of Psychology published an article on Coupling of Rhythms in Prefrontal Cortex and Autonomic Nervous System in School-Age Children in the *Annals of the New York Academy of Sciences (PNAS)*. For details check:
<http://dx.doi.org/10.1111/nyas.70203>

Ongoing Data Management and Analysis at the Center:

- * Coding BRANCH Wave 1 observational data
- * Digitalizing Stress Physiology time log data
- * Working on MRI pre-processing pipeline
- * Re-organize DORRY data
- * Processing BRANCH sleep data
- * Enrichment of eye tracking
- * Cleaning BRANCH survey data

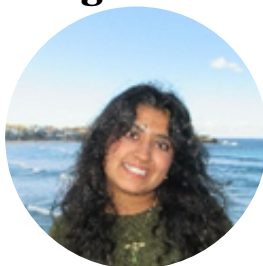


Undergraduate Research Assistant (URA) Spotlight

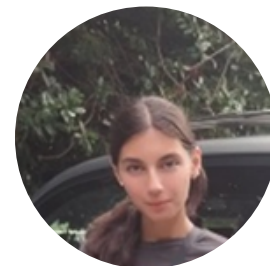


Congrats to our URAs of the Month!

- **22 URAs** have been working in Data Collection, Data Management and Community Engagement
- Regular meetings held with graduate mentors to discuss semester's work
- URAs working with mentors on CURO research abstracts



Mahi Khemani is a Biomedical Physiology major (Honors College) and is a reliable member of the data collection team and takes initiative in her tasks



Shayla Kolenovic is a Psychology major, takes initiative and steps in to support the team during W2 visits when needed



BRANCH Wave 2



Wave 2 research teams are busy conducting BIRC visits to collect survey data and complete MRI scans of participants!

Science Spot



Graduate students lead weekly meetings to discuss selected scientific articles or their ongoing research. February presentation topics were:

- 2/5/2026 Sleep & BSCT - "Sleep as a Double-Edged Bio-Regulator: How Irregular Sleep Shapes Adolescent Depression and Anxiety" by **Katie Harmeyer**
- 2/12/2026 Enigma by **Avary Evans**
- 2/19/2026 Exploring Caregiver Presence During fMRI Experiences with Young Children by **Lauren Holley**
- 2/26/2026 Attention by **Brooklyn Crabtree**

GCDS Updates

- ★ Preparations are underway for the Inaugural GCDS Conference, to be held April 22-23, 2026
- ★ Avary Evans is scheduled to present her Masters Thesis Proposal on February 27
- ★ Rabeeh Azarmehr is scheduled to defend her PhD dissertation on March 17
- ★ Feiyu Wang has completed her operator training and is cleared to do MRI scans
- ★ Lauren Holley was part of a team of authors in the recently published article titled "Helped with confidence, accountability, and community": A qualitative study exploring child life specialists' experiences in virtual clinical supervision in *The Clinical Supervisor*.
- ★ Kimberly Bennett was featured in VoyageATL magazine about the work done at Cultivating A Lifetime of Legacy, Inc. - a nonprofit organization empowering and preparing youth for lifelong success